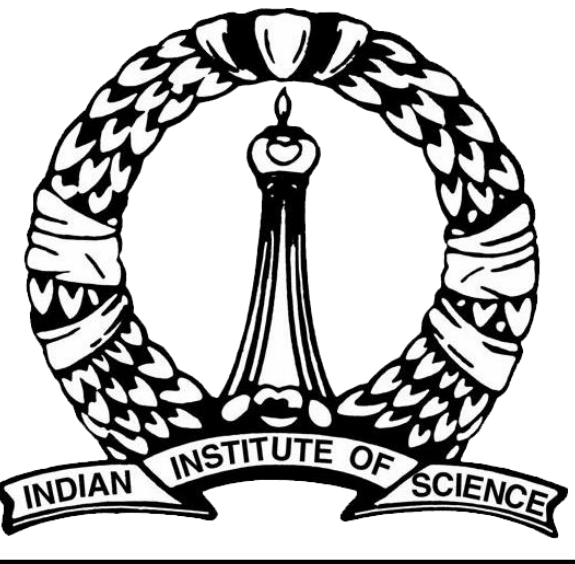


DISTRIBUTION OF 'PROTECTED PRIMATES': PROTECTED AREAS OF WESTERN GHATS REGIONS OF KERALA



Arjun, S.R., Bharath Setturu, Ramachandra, T.V.
Energy & Wetlands Research Group, CES TE 15, Indian Institute of Science

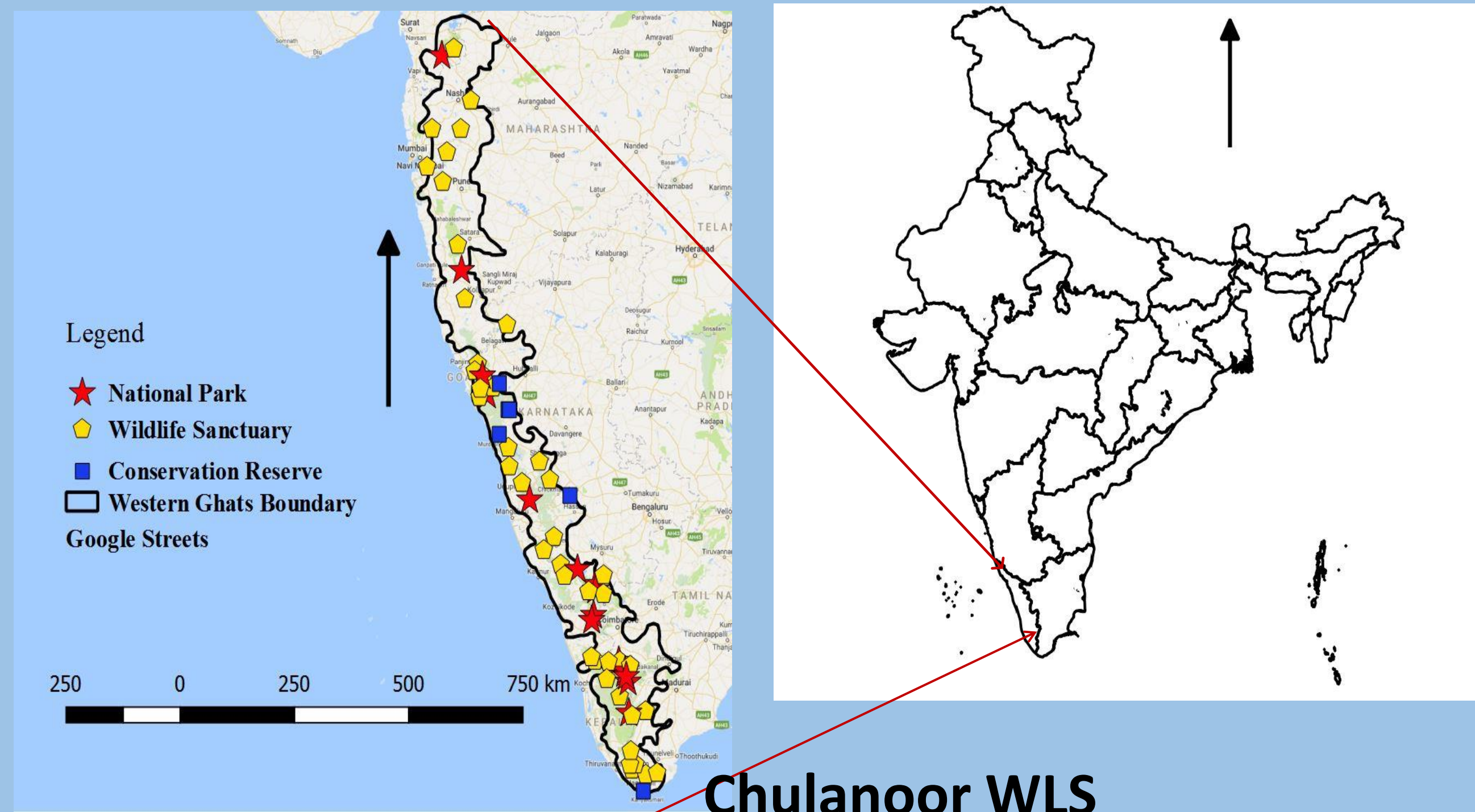


WESTERN GHATS

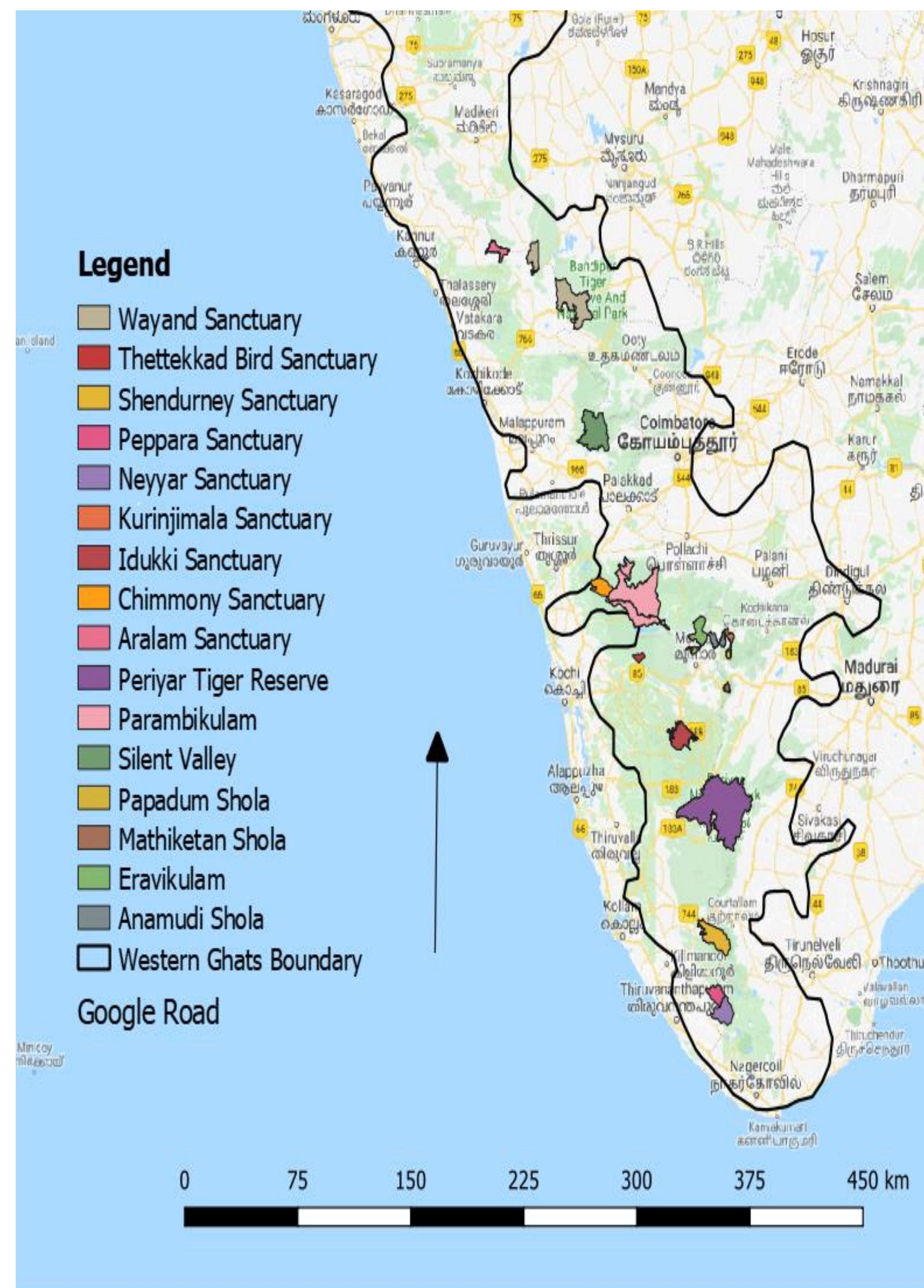
Western Ghats covers 5% of India's land area and constitutes one among the top eight biodiversity hotspot in World. It contains more than 4000 (27%) of plant species in India and most of the vertebrates of peninsular India are found here. It also exhibits high endemism, about 1500 endemic plant species or two-third of India's endemic plants are found here. WG have 68 protected areas, including 15 National Parks, 47 Wildlife Sanctuaries, & 6 Conservation Reserves. It is also embraced with 2 Biosphere Reserve, Nilgiri and Agasthyamalai Biosphere Reserve.

STUDY AREA

Protected Areas in Western Ghats: Kerala Region



- | | |
|-----------------------|------------------------------|
| Anamudi shola NP | Idukki WLS |
| Eravikulam NP | Kootiyoor Pea Fowl Sanctuary |
| Mathikethan NP | Kurinjomala WLS |
| Pampadum NP | Malabar WLS |
| Silent valley NP | Neyyar WLS |
| Parambikulam NP | Peechi WLS |
| Periyar Tiger reserve | Peppara WLS |
| Aralam WLS | Shendurney WLS |
| Chimmony WLS | Thettakkad Bird Sanctuary |
| Chinnar WLS | Wayanad WLS |

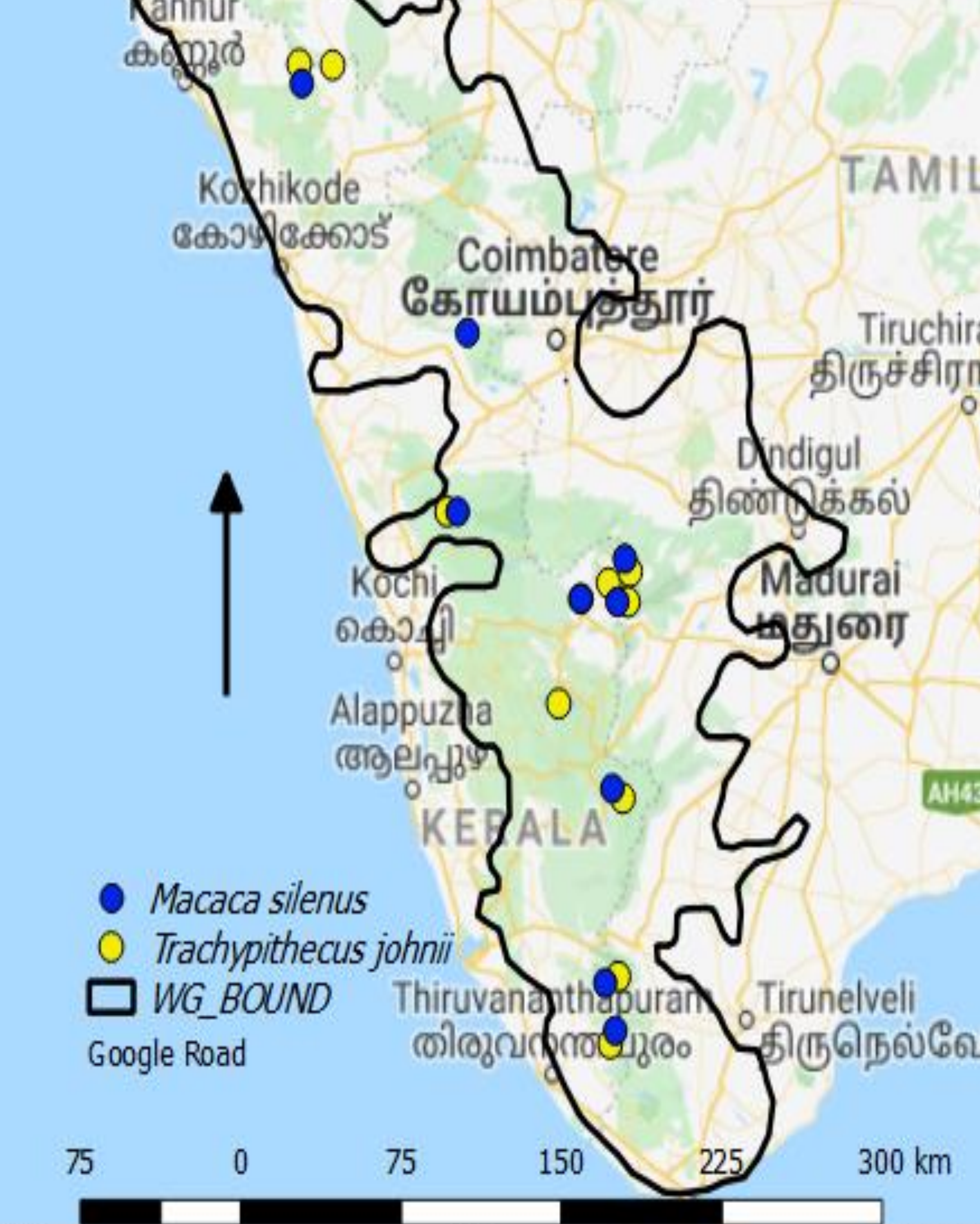


SPECIES DISTRIBUTION IN PROTECTED AREAS OF KERALA

Protected areas in the Kerala region has higher species distribution and diversity. The maximum number of threatened species are also reported from this Southern region of WG.

- ❖ Fauna: 2261
- ❖ Flora: 3867
- ❖ Percentage Endemism: 23.89%
- ❖ Threatened Species: 4.81%
- ❖ Primates: 7 species
- ❖ Endemic species: 2 species

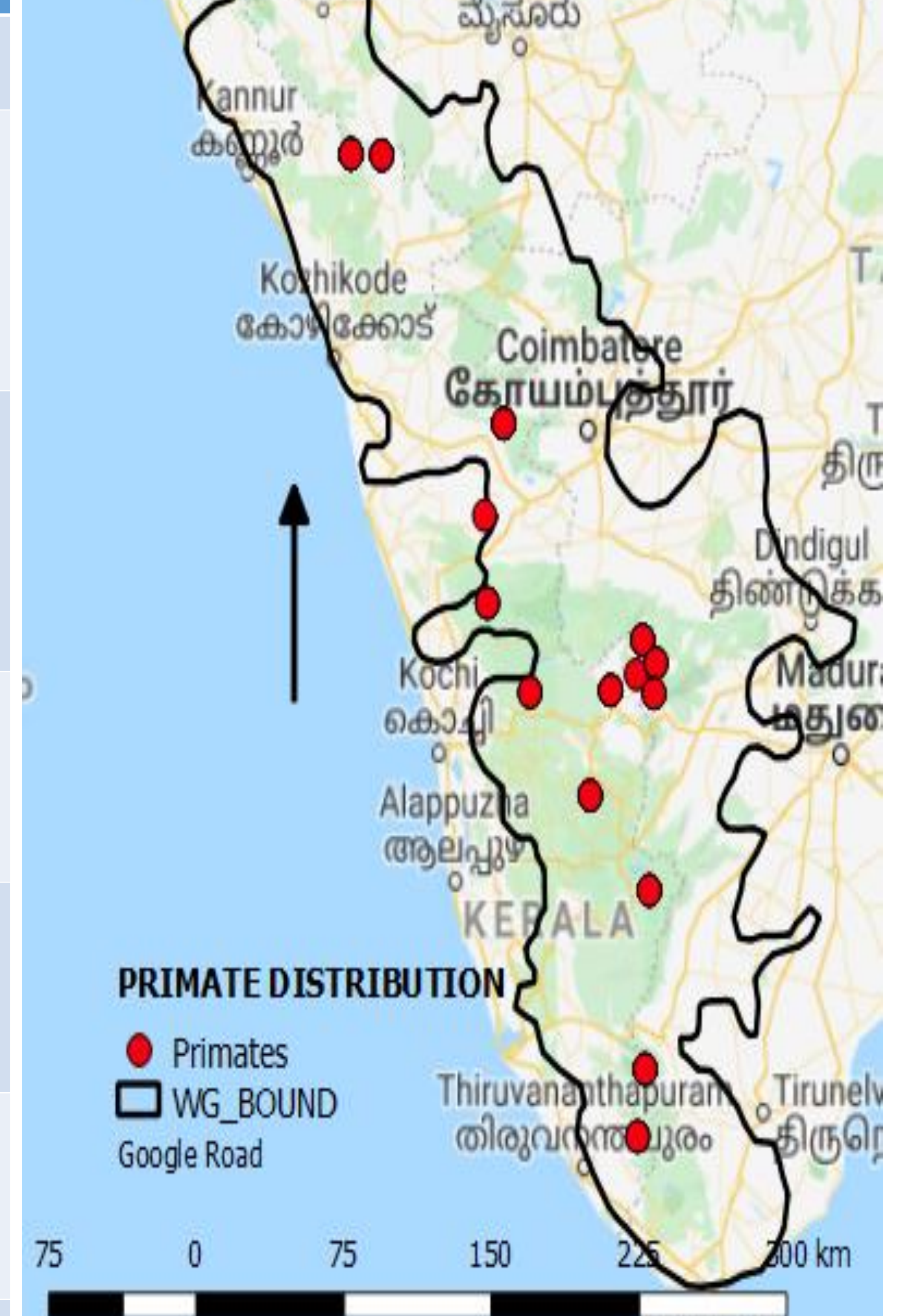
DISTRIBUTION OF ENDEMIC PRIMATES



PROTECTED AREAS AND PRIMATE GROUPS

Protected Area	Species
Aralam WLS (5 Sp)	<i>Semnopithecus entellus</i> , <i>S. hypoleucos</i> , <i>Trachypithecus johnii</i> , <i>Loris lydekkerianus</i> , <i>Macaca radiata</i> , <i>M. silenus</i>
Parambikulam Tiger Reserve (5 Sp)	<i>Trachypithecus johnii</i> , <i>Macaca silenus</i> , <i>M. radiata</i> , <i>Loris tardigradus</i> , <i>Semnopithecus entellus</i>
Silent Valley NP (5 Sp)	<i>Macaca radiata</i> , <i>M. silenus</i> , <i>Semnopithecus entellus</i> , <i>S. hypoleucos</i> , <i>Loris tardigradus</i>
Eravikulam NP (4 Sp)	<i>Macaca radiata</i> , <i>M. silenus</i> , <i>Trachypithecus johnii</i> , <i>Semnopithecus entellus</i>
Periyar NP & Tiger Reserve (4Sp)	<i>Loris tardigradus</i> , <i>Macaca radiata</i> , <i>M. silenus</i> , <i>Trachypithecus johnii</i>
Shendurney WLS (4 Sp)	<i>Loris tardigradus</i> , <i>Macaca radiata</i> , <i>Macaca silenus</i> , <i>Trachypithecus johnii</i>

DISTRIBUTION OF PRIMATES IN PROTECTED AREAS OF KERALA



REFERENCE

- Management Plan Aralam Wildlife Sanctuary (2012 - 2022).
- Tiger Conservation Plan Periyar Tiger Reserve 2012-13 to 2021-600
- Silent Valley National Park, MANAGEMENT PLAN- 2012-26s3.
- Management Plan 2012-2013 to 2021-2022, Idukki Wildlife Sanctuary

Acknowledgement

We are thankful to Indian Institute of Science, Bangalore and IITM- Kerala